



Lukens Pierce House, East
Fallowfield Township, 1856

The Chester County Ledger

The Newsletter of the Chester County Historic Preservation Network

June 2006

Volume 9, Number 2

Plans are Underway for The National Iron and Steel Heritage Museum

The history of the iron and steel industry in America is a fascinating story, in many ways paralleling the history of America. The National Iron and Steel Heritage Museum will tell this story.

The growth of the Lukens Steel Company from a water-powered slitting mill in the 18th century, led by this country's first female industrialist Rebecca Lukens, to the world's largest rolling mill in the 20th century is a microcosm of the story of iron and steel in America itself. The museum will interpret this story by focusing on:

- The people, including not only members of the owners families, but also the iron and steel workers themselves
- The places, the homes and offices, the open hearth mills and rolling mills
- The process of steel making, rolling and finishing

- The products, iron and steel plate, structural steel and specialty products
- It is fitting that The National Iron and Steel Heritage Museum will be located in Coatesville. The history of the



Artist's rendering of the interior of the main exhibit area

city is intimately associated with the history of iron and steel production, and with Lukens Steel Company's 196-year history. The museum will actually be housed in the oldest continuously operated steel mill in North America.

Exhibits will be located in the 35,000 square foot brick 120" Rolling Mill Motor House. The history of the steel industry will be interpreted using interactive displays that will envelope visitors in the experience of a working

The Chester County Historic Preservation Network is an affiliation of local organizations and individuals dedicated to protecting and preserving Chester County's historic resources and landscapes through education, facilitation, and public and private advocacy.

Inside:

Plans are Underway for the Iron and Steel National Heritage Museum

Presentation on Local Historic Preservation Tools

Jane L. S. Davidson Receives the President's Award

Chester County and the National Register of Historic Places

Spotlight on the Lightfoot Mill, West Pikeland Township

Announcing the Launch of the CCHPN Website

Chester County Town Tours and Village Walks 2006 Tour Schedule

Scott Huston

Marti Coats

Susan Shearer

Matthew Roberson

Matthew Roberson

Matthew Roberson

Jane L. S. Davidson

steel mill. Next to the Motor House will be an outdoor interpretive area, which may contain large exhibits such as the World Trade Center “trees”, and the Lukens 1911 HK Porter Steam Engine currently on display at the Lukens Executive Office Building. Adjacent to the Museum, against a backdrop of current mill operations, the restored Rebecca Lukens house and a re-creation of the original mill show the contrast between a small family company that grew into a major international corporation.

The creation of the Museum is an important part of the redevelopment of the city of Coatesville. The urban revitalization of what has been a depressed area will provide not just an economic stimulus and an increase in jobs and education opportunities, but a surge of community pride. Along with the continuing development of the Lukens Historic District, the Museum will serve as a cultural and historical focal point, showcasing the rich heritage of the city.

The National Iron and Steel Heritage Museum will benefit not just the City of Coatesville but the entire area. Heritage travelers, tourists that specifically travel to visit cultural and historic locations, usually spend more and stay longer than other travelers, generating a greater economic benefit. These travelers will need food, lodging, and other services during their stay. In short, the museum will become another quality destination in the Brandywine Valley and Philadelphia region.

The Museum is a work in progress. Currently, Brandywine Mansion, the home of Rebecca Lukens, is in the process of being acquired for the purpose of restoration. Collection of display items includes everything from Lukens coffee mugs and steelworkers’ lunchboxes, to the sonar sphere from the nose of a nuclear submarine.

For more information about the future National Iron and Steel Heritage Museum, visit www.steelmuseum.org.
- Scott Huston
National Iron and Steel Heritage Museum

Presentation on Local Historic Preservation Tools June 8, 2006, 7pm, Brandywine River Museum

The Brandywine Conservancy is holding a meeting on local historic preservation tools; what tools are available, how well they are being used; and how the Conservancy might make them more effective. The discussion will be led by Bob Wise, of Wise Preservation Planning, and John Snook, of the Brandywine Conservancy, with participation by Chester County representatives

and others invited. Frone Crawford, Esq. will provide a review of pertinent recent case law. This program is sponsored by Brandywine Conservancy Municipal Assistance Program and co-sponsored by the CCHPN. For more information and to RSVP, please contact Marti Coats: 610-388-8351, mcoats@brandywine.org
- Marti Coats

The Chester County Ledger

Staff

Editor Matthew E. Roberson
Circulation Director Robert Layman
Marketing Director Robert Wise

Published by:

The Chester County
Historic Preservation Network

Board of Directors

President Robert Wise
Vice President Mary Sue Wiedmer
Treasurer Robert Layman
Secretary Tanya Middleton
Peter C. Benton
Jane L. S. Davidson
Dr. Elaine Husted
Brian Lihou
Matthew E. Roberson
Kathryn Yahraes

Direct all queries to: The Editor, CCHPN, P.O.Box 216, Chatham, PA 19318. Letters to the Editor and articles for the Chester County Ledger are welcome. There is no guarantee, however, that submissions will be published. No such submissions will be returned. The CCHPN does not necessarily endorse the content of advertisements herein.



Chester County Historic Preservation Network June Dinner and Presentation 2006 Main Street Kennett Square and Tribute to Jane L. S. Davidson

Wednesday, June 21, 2006
101 East State Street - The "Genesis Walkway"
Kennett Square, Pennsylvania

- 5:30pm **Check-in and Exhibits** (beverages available)
- ✓ Walking tour of Historic East Linden Street: departs promptly at 5:30, led by Ms. Theresa Bass, President of Historic East Linden Project
 - ✓ Kennett Square Borough Historic Resource Survey
 - ✓ Images of proposed structure at 128 East State Street
 - ✓ Artifacts from the Historic Commission's collection
- 6:30 **Welcome & Invocation, *Leon Spencer, Mayor of Kennett Square***
✓ Dinner is Served
- 7:15 **Opening Remarks, *Bob Wise, President, CCHPN,***
Brief History, *Mary Sue Wiedmer, Vice President, CCHPN*
- 7:20 **Realizing the Potential of Kennett Square: Overview of Recent Projects**
Jeff Darman, President, Kennett Square Borough Council
- 7:30 **Commercial Development with Sensitivity to Historic Structures**
Jim Clymer, Key Real Estate, LLC and Kerry Haber, Bernardon, Haber and Holloway Architects PC
- 7:50 **Transforming Downtown Kennett**
Mary Hutchins, Executive Director, Historic Kennett Square
- 8:00 **Special Presentation: Tribute to the Lifetime Work of Jane L. S. Davidson**
Bob Wise, President, CCHPN, and Additional Dignitaries
- 8:25 **Closing Remarks, *Dan Maffei, Chairman, Kennett Historical Commission***

Registration Fee: \$20.00 for Members, \$25.00 for Non-members

Location Maps
on the Back 

Dinner Registration Form

Please send this completed registration form, indicating the number of people attending, to the Chester County Historic Preservation Network, P.O. Box 216, Chatham, PA 19318. Walk-ins are welcome, but registration helps us plan for the food. For questions and directions, please call Bob Wise at 610-722-5818.

Please R.S.V.P. by June 12, 2006

Name:

Organization:

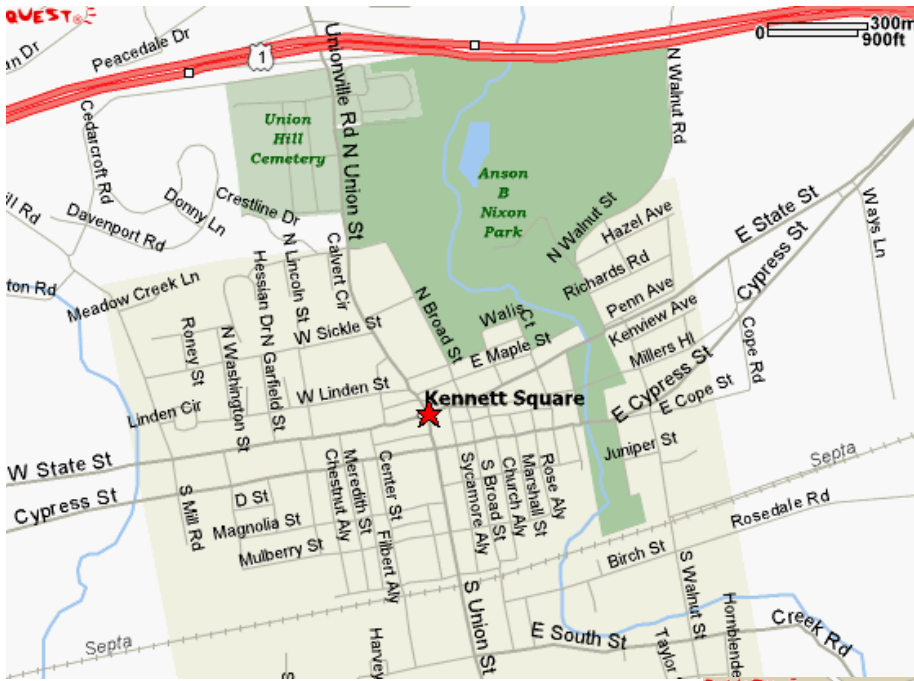
Address:

Phone:

Email:

Number Attending:

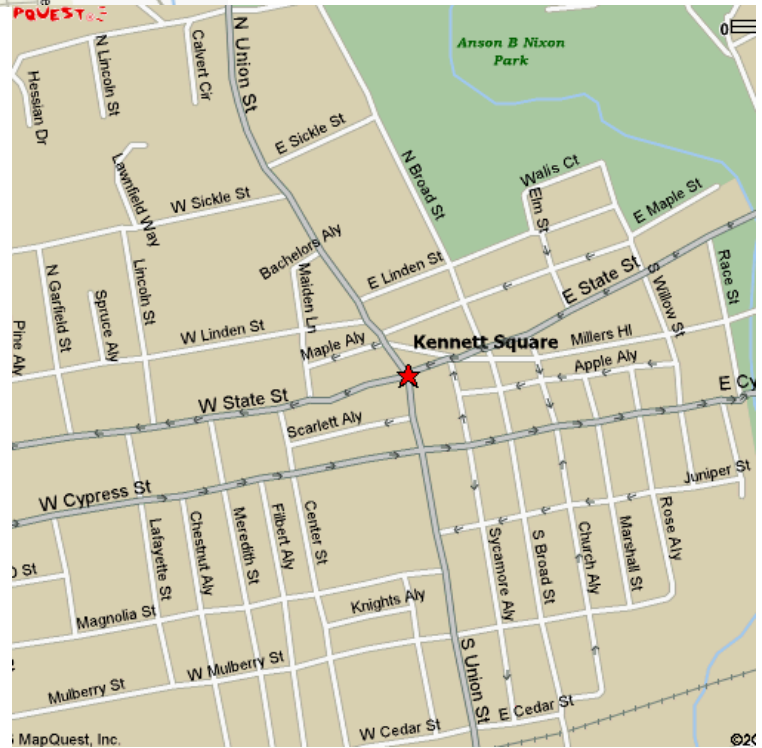
CCHPN June Dinner and Presentation 2006



Directions from US Route 1

Take the Exit for Route 82 South (Union St.) The Genesis Building is in the northeast corner of the intersection, and the “Walkway” is on the east side of the building, accessed from State Street.

You can park for free after 5:00pm on the streets or in the parking garage. Look for the giant “P” signs leading to the garage.

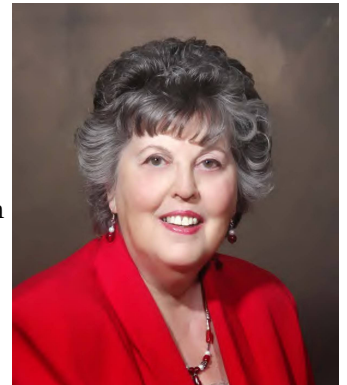


Jane L. S. Davidson Receives the President's Award from PHMC and Preservation Pennsylvania, Inc.

The Pennsylvania Historical and Museum Commission and Preservation Pennsylvania, Inc. will be honoring Jane L. S. Davidson, Chester County's Heritage Preservation Coordinator and County Historic Preservation Officer on May 31, 2006, during Pennsylvania's Annual State Historic Preservation Awards Ceremony. The President's Award will be presented to Ms. Davidson in recognition of her lifetime achievement on behalf of Historic Preservation in Chester County, Pennsylvania and the United States

of America. On January 12, 1982, the Chester County Board of Commissioners appointed her as the County Historic Preservation Officer, the first of its kind in Pennsylvania and one of the first in the nation.

- Susan Shearer



Chester County and the National Register of Historic Places

In 2005, one historic resource, the Lightfoot Mill, was listed as a National Historic Landmark, one historic district boundary increase was listed in the National Register of Historic Places, and five historic resources were determined to be eligible for listing. Congratulations to everyone for their hard work and expense of achieving the recognition and protections offered by the National Register!

- ✓ Lightfoot Mill, West Pikeland Township, NHL
- ✓ West Chester Historic District (Boundary Increase), Listed
- ✓ Daniel H. Kulp Farm, East Coventry Township,

- Determined Eligible (DoE)
- ✓ Schuylkill Navigation Company Canal, East Coventry and North Coventry Townships, DoE
- ✓ Thomas Dallett House, Thornbury Township, DoE
- ✓ Benner Property, West Vincent Township, DoE
- ✓ Carter Property, West Vincent Township, DoE

Currently in Chester County, there are a total of ten National Historic Landmarks, 322 listed historic resources, and 297 that have been determined to be eligible for listing. Great work, Chester County preservationists!

- Matthew Roberson

Spotlight on the Lightfoot Mill, West Pikeland Township

In April, 2005, the Lightfoot Mill, now known as the Mill at Anselma, in West Pikeland Township, was listed as a National Historic Landmark, the highest recognition the federal government confers on privately owned historic resources. The following summary of its Statement of Significance is taken from the National Park Service's website for National Historic Landmarks, <http://tps.cr.nps.gov/nhl/>

"Lightfoot Mill represents an extremely rare archetypal example of a small, eighteenth century custom grain mill with its surviving, completely intact, power transmission system. Surveys suggest that no other custom mills in the United States survive from this period with intact machinery. The basic technology of this mill dates from the mid-eighteenth century, adapted to make use of several of the automating inventions of the famous American inventor, Oliver



The Lightfoot Mill, c. 1747

Evans, which were appended to the original works. At Lightfoot one can see the impact of automation on

traditional milling. Milling machinery requires constant repair, maintenance and replacement of its moving parts. At Lightfoot, this process has occurred using in-kind materials and in original order and forms. The milling system functions today much as it did in the mid-eighteenth century.”

Additional information is found in the National Register Nomination Form for the resource, dated April 13, 1973:

“Samuel Lightfoot built the combination grist and lumber mill on Pickering Creek in 1747. By 1765, with the mill prospering, Lightfoot was one of the wealthiest and largest landowners in Chester County...Besides his key role in the area’s commercial development Lightfoot was prominently involved in community and religious affairs. In 1736, he was

chosen a commissioner of Chester County, and in 1751, he was appointed Justice of the Peace for the County.”

Today, the Mill at Anselma is being developed as a significant heritage tourism attraction, owned and operated by the The Mill at Anselma Preservation and Educational Trust. The Trust was formed in 1998 with the vision of developing the historic Anselma Mill and village as a historical attraction for the enjoyment of families, schoolchildren, tourists and scholars. In June of 2005, the Trust received a Merit Award from the American Association for State and Local History for the restoration of the mill.

For more information, contact Heather P. Reiffer, Executive Director at 610-827-1906 hpreiffer@anselmamill.org

- Matthew Roberson

Announcing the Launch of the New Chester County Historic Preservation Network Website <http://www.cchpn.org>

Coming in June, 2006, the Chester County Historic Preservation Network will be launching its website, providing professional and avocational preservationists throughout the county with a great deal of information you will need to preserve your buildings, landscapes, features, sites, and all other types of valuable historic resources. Following a two-year effort on the part of CCHPN board members and its consultants, Beacon Technologies of Kennett Square, we have put together a website that includes historical information about the county; sources of aid for historic property owners and for members of historical commissions and HARBs; a calendar of upcoming events (ours and those of other preservation organizations); and information about participating in the network. The goal is to aid your efforts, support community and regional preservation objectives, and serve as a central clearinghouse for preservation-related information. This project was funded through grants from the Pennsylvania Historical and Museum Commission and the Chester County Conference and Visitors Bureau.



This is a preliminary screenshot of the homepage.

Please take a look at the site this summer and provide us with feedback on what is good and bad about the site. We want it to serve you, and we need your input to make it as good as it can be. Thanks!

- Matthew Roberson

Chester County Town Tours and Village Walks 2006 Tour Schedule

June 1 - Discovering the East End, West Chester

Stroll the quaint streets and along quiet alleyways to reveal West Chester's oldest African-American neighborhood and industrial heritage. Sponsor: West Chester Borough Historical and Architectural Review Board, 610-918-7348

June 8 - Romansville Quaker Meeting & Its Village

Celebrate the Quaker Meeting's 160th anniversary and visit the sites where many 19th century artisans plied their trades: tinsmiths, blacksmiths, carpenters, and small stores. Sponsor: West Bradford Township Historical Commission, 610-486-0790

June 15 - Families & Farmhouses of Old New Garden

A bus tour featuring New Garden's 18th- and 19th- century farmhouses, the homes of Irish Quakers and later English settlers. Sponsor: New Garden Township Historical Commission, 610-268-2468

June 22 - Lionville's North Side; Uwchlan Meeting's 250th

A cluster of historic properties on North Village Avenue spans centuries of Lionville's heritage, including the Uwchlan Quaker Meeting, celebrating its 250th anniversary this year. Sponsor: Uwchlan Township Historical Commission, 610-363-9450

June 29 - Berwyn: Town Center

Stroll through one of the railroad towns along the famous Main Line with a town center transformed into shops, restaurants and a fantastic ice cream shop. Sponsor: Berwyn – Devon Business And Professional Association, 610-644-0138

July 6 - No Tour

July 13 - The "Battle Axes" of North Coventry

Explore the farm areas where the "Battle Axes", an early 19th century radical religious movement, became known as Free Love Valley. Sponsor: North Coventry Township Historical Commission, 610-323-1694

July 20 - Early 20th Century Kimberton Village

Walk along the village's fourth stage of development in the early 1900s. Prosperous workers from the Phoenixville Iron Company built homes while others purchased Sears and Roebuck houses from a mail-order catalog. Sponsor: East Pikeland Township Historical Commission and Pikeland Historical Society, 610-933-1770

July 27 - Historic Lancaster Avenue In Downingtown

Step back in time and explore Chester County's oldest frontier town where the log house has been a sentinel since the early 1700s and historic places of stone and brick fill the streetscape along the Philadelphia – Lancaster Turnpike. Sponsor: Downingtown Borough Historical And Parks Commission, 610-269-0344, Ext. 246

August 3 - East Vincent's Revolutionary War Hospital and Cemetery

Stand on the hillside with a Chester County vista and reflect on the twenty-two Revolutionary War soldiers who gave their lives for our freedom centuries ago and hear the story of the log church that served as a hospital. Sponsor: East Vincent Township Historical Commission, 610-933-4424

August 10 - Yellow Springs' Historic Discovery Trail

The new Discovery Trail takes the visitor through time. Beginning with the Lenni-Lenape who found the "yellow waters", the trail tells the story of the Revolutionary War, the fashionable spa, the orphanage, and the artists who came to paint and make movies. Sponsor: Historic Yellow Springs, 610-827-7414, Ext. 10

August 17 - Paoli Revolutionary War Battlefield

Stand where the Redcoats made a midnight attack using sabers and bayonets. Called the "Paoli Massacre" because of the brutal atrocities, guides and displays will interpret that fateful night in 1777 at this National Historic Battlefield. Sponsor: Paoli Battlefield Preservation Fund, 610-644-2602

August 24 - Parkesburg: Historic Main Street

Tour a town whose roots stem from the Fountain Inn, a colonial tavern and stopover for Lancaster farmers taking their livestock to market. Modeled after European industrial towns, it was home to the Philadelphia and Columbia Railroad repair shops and the Parkesburg Iron Company. Sponsor: Parkesburg Area Business Association, 610-857-2616

For a brochure, contact the Chester County Parks & Recreation Department, 610-344-6415, and the Chester County Conference & Visitors Bureau, 610-719-1730. The Chester County Historic Preservation Network is a co-sponsor of these events.

- Jane L. S. Davidson

The Chester County Ledger Bulletin Board



www.fremsandfrens.com

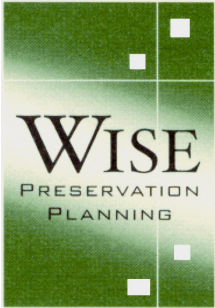
FRENS and FRENS, L.L.C.
Restoration Architects

120 South Church Street · West Chester, PA 19382 · Telephone 610.430.7730
Fax 610.430.7621 · E-mail dfrens@frensandfrens.com

Any time is a good time to join the Chester County Historic Preservation Network!
We need you!

Annual Membership dues:
Individual: \$15.00
Municipal: \$75.00
Corporate: \$150.00
Benefactor: \$500.00

Please send checks to the address below.
All contributions are tax-deductible.



ROBERT WISE
HISTORIC PRESERVATION PLANNER

Station Square I • Suite 104
37 North Valley Road
Paoli, PA 19301
610.722.5818
FAX 610.722.5806
www.wisepreservation.com
bwise@wisepreservation.com



425 McFarlan Road, Suite 200
Kennett Square, PA 19348
T 610-444-2900 F 610-444-6525
www.bernardon.com

ARCHITECTS PC

ARCHITECTURE | INTERIORS | LAND PLANNING

The Chester County Ledger
The Newsletter of the Chester County
Historic Preservation Network
P.O.Box 216
Chatham, PA 19318

PLEASE FORWARD

Please come and join us for the

Summer 2006 Dinner at
Kennett Square
Celebrating their
Main Street Successes
and the lifetime work of
Jane L. S. Davidson,
plus many other items!

June 21, 2006
5:30pm